


P. MICHAEL STURLA, CHAIRMAN  
414 MAIN CAPITOL BUILDING  
P.O. BOX 202096  
HARRISBURG, PENNSYLVANIA 17120-2096  
(717) 787-3555  
FAX: (717) 705-1923



HOUSE DEMOCRATIC POLICY COMMITTEE

WEBSITE: [www.pahouse.com/policycommittee](http://www.pahouse.com/policycommittee)  
EMAIL: [policy@pahouse.net](mailto:policy@pahouse.net)  
    @PADemPolicy

**House of Representatives**  
COMMONWEALTH OF PENNSYLVANIA

**HOUSE DEMOCRATIC POLICY COMMITTEE HEARING**

**Topic: Revitalizing Main Street**

**Lower Providence Township Building – Eagleville, PA**

**July 24, 2019**

**AGENDA**

- 2:00 p.m. Welcome and Opening Remarks
- 2:10 p.m. Panel One:
- Steve Barth, President/Founder, Barth Consulting Group
  - Rob Henry, Executive Director, GVF
  - John Cover, Assistant Director, Montgomery County Planning Commission
  - Maggie Dobbs, Senior Community Planner, Montgomery County Planning Commission
- 2:40 p.m. *Questions & Answers*
- 3:00 p.m. Panel Two:
- Martin Miller, Commissioner, West Norriton Township
  - Don Delamater, Township Manager, Lower Providence Township
  - Ainsand Wright-Riggings III, Mayor, Borough of Collegeville
  - Chris Heleniak, Township Manager, Skippack Township
- 3:30 p.m. *Questions & Answers*
- 3:50 p.m. Closing Remarks







455 CHAMBERS DRIVE SUITE 200  
 FIRST WASHINGTON PL 19008  
 TELE: (215) 283-9444  
 FAX: (215) 283-9447

DESIGN BY: RAL  
 DRAWN BY: RAL  
 CHECKED BY: SLB

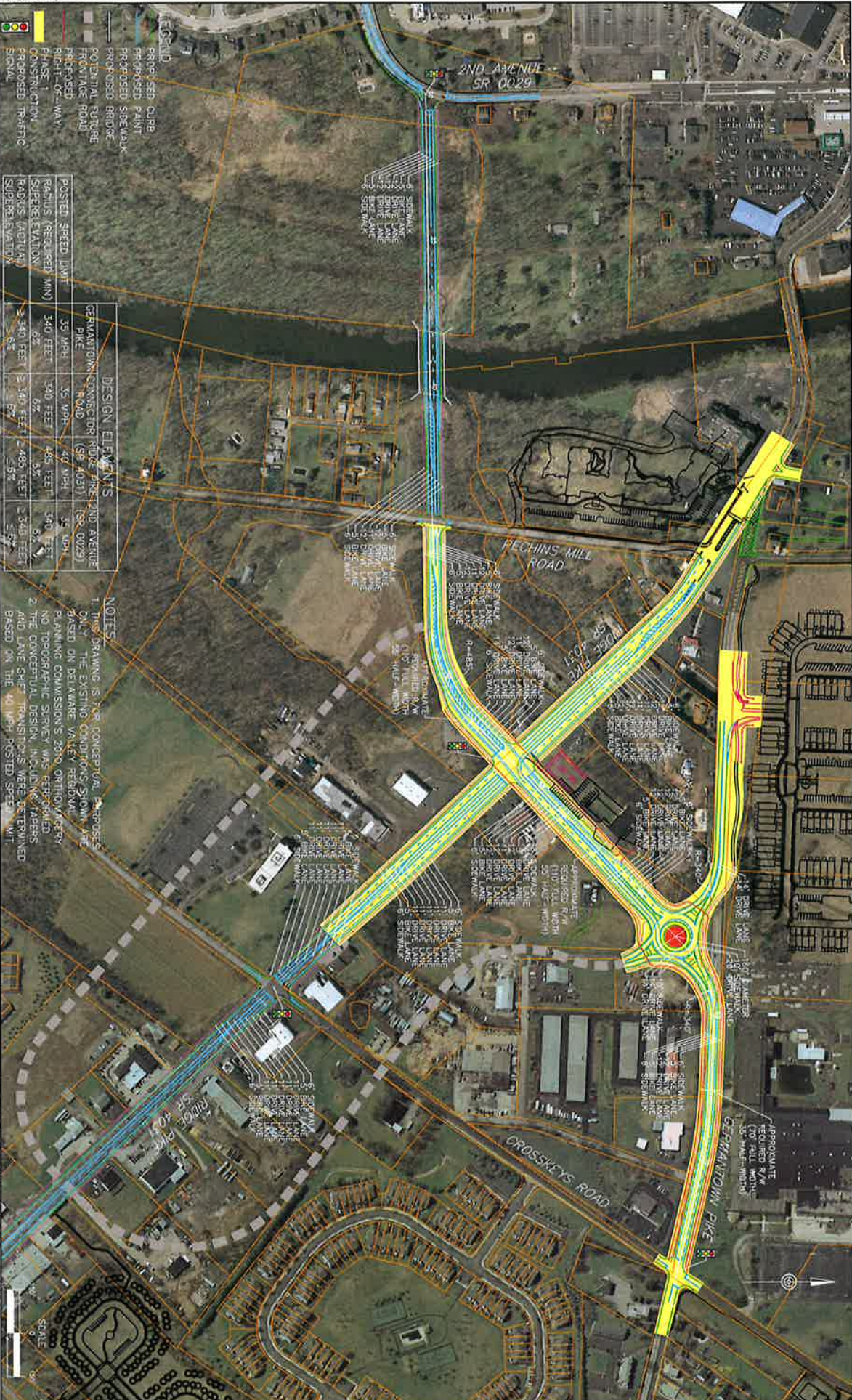
JOB NO: 816673  
 DWS: 6729CPT03.DWG  
 DATE: 06/13/18

PREPARED FOR:  
 LOWER PROVIDENCE TOWNSHIP  
 100 PARQUE DRIVE  
 EAST WINDSOR, PA 200

LOWER PROVIDENCE TOWNSHIP

WEST RIDGE PIKE CORRIDOR STUDY  
 CONCEPTUAL PLAN  
 ALTERNATIVE 3

MONTGOMERY COUNTY



**LEGEND**

- PROPOSED CURB
- PROPOSED PAVT
- PROPOSED SIDEWALK
- POTENTIAL BRIDGE
- POTENTIAL FUTURE FRONTAGE ROAD
- PHASE 1 RIGHT-OF-WAY
- CONSTRUCTION
- PROPOSED TRAFFIC SIGNAL

DESIGN ELEMENTS	
GERMANTOWN CONNECTOR PIKE (SR 4031)	35 MPH
POSTED SPEED LIMIT	35 MPH
RADIUS (REQUIRED MIN)	340 FEET
SUPERELEVATION	6%
RADIUS (ACTUAL)	340 FEET
SUPERELEVATION	6%

**NOTES**

- THIS DRAWING IS FOR CONCEPTUAL PURPOSES ONLY. THE EXISTING CONDITIONS SHOWN ARE BASED ON DELAWARE VALLEY REGIONAL PLANNING COMMISSION'S 2010 ORTHOGONALITY NO TOPOGRAPHIC SURVEY WAS PERFORMED AND THE CONCEPTUAL DESIGN, INCLUDING LANE AND LANE SHOULDER TRANSECTIONS WERE DETERMINED BASED ON THE 40 MPH POSTED SPEED LIMIT.

SCALE: 1" = 40'

APPROXIMATE ROAD FULL WIDTH: 50'-100'-100'

APPROXIMATE ROAD FULL WIDTH: 50'-100'-100'

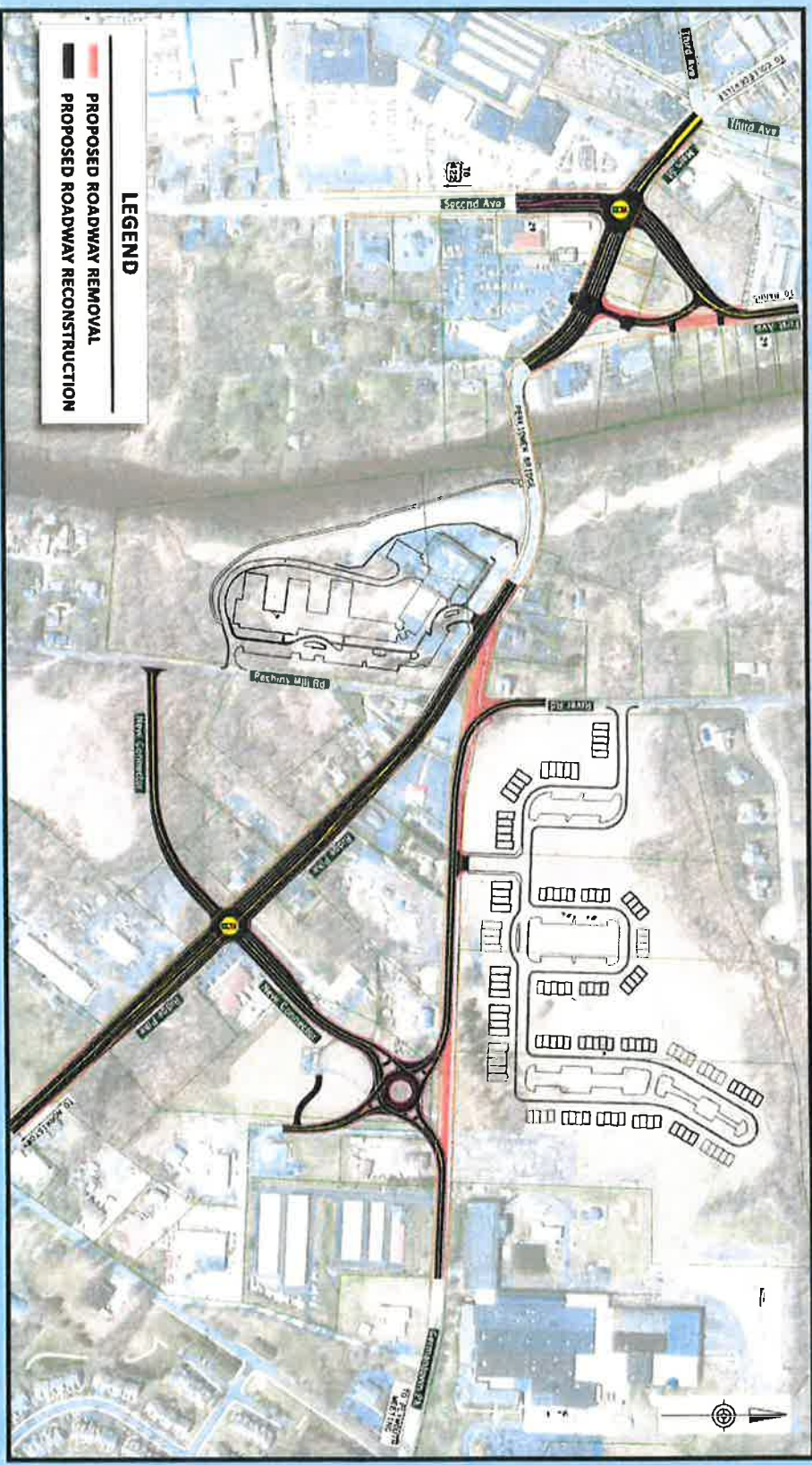
APPROXIMATE ROAD FULL WIDTH: 50'-100'-100'



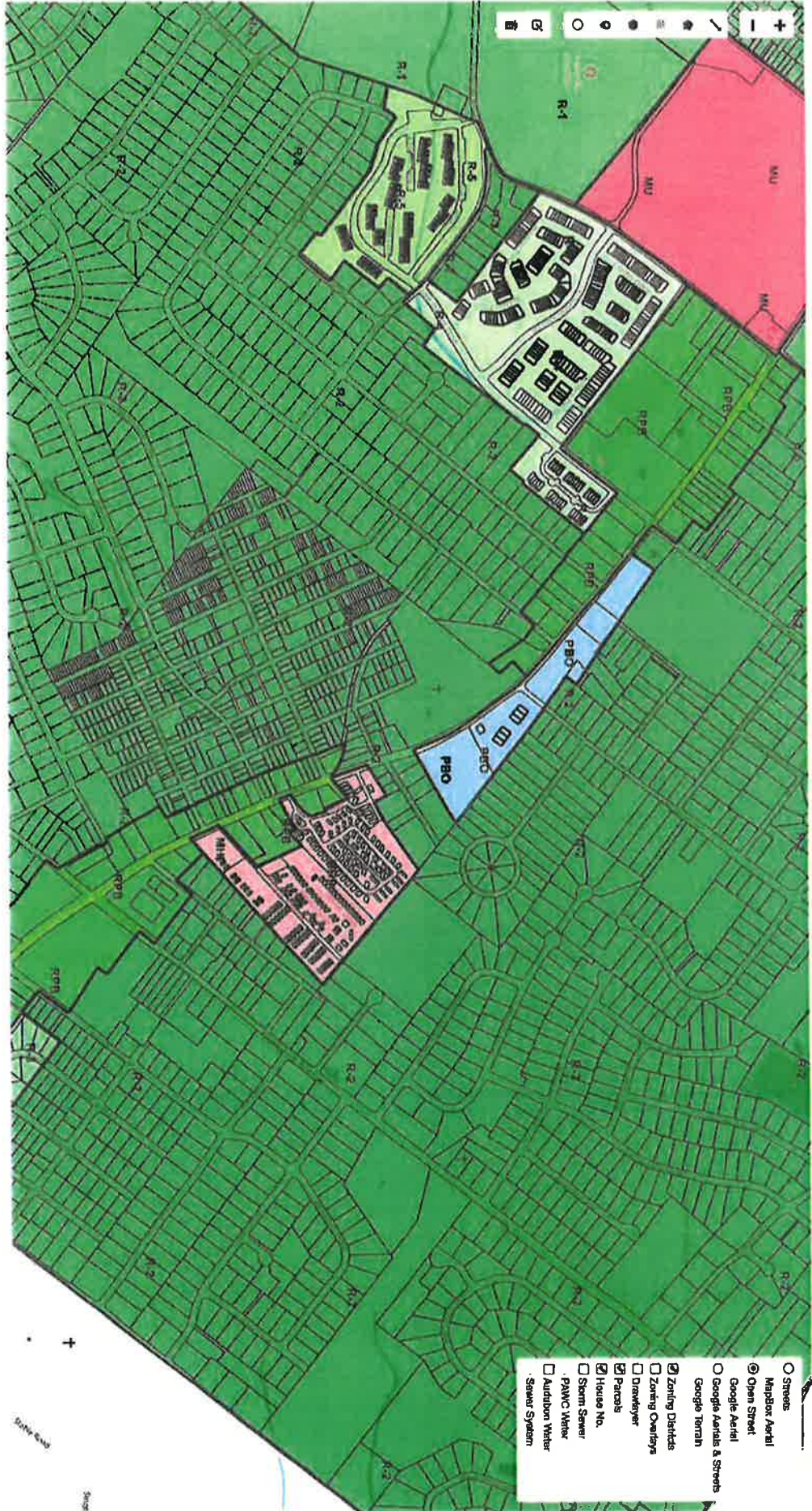
**pennsylvania**  
DEPARTMENT OF TRANSPORTATION

# PERKIOMEN CROSSING PROJECT

## SR 4031, SECTION C2B



### PROPOSED IMPROVEMENTS (Overall)



- Streets
- MapBox Aerial
- Open Street
- Google Aerial
- Google Assets & Streets
- Google Terrain
- Zoning Districts
- Zoning Overlays
- Drawkeyer
- Parcels
- House No.
- Storm Sewer
- PAVIC Water
- Audubon Water
- Sewer System